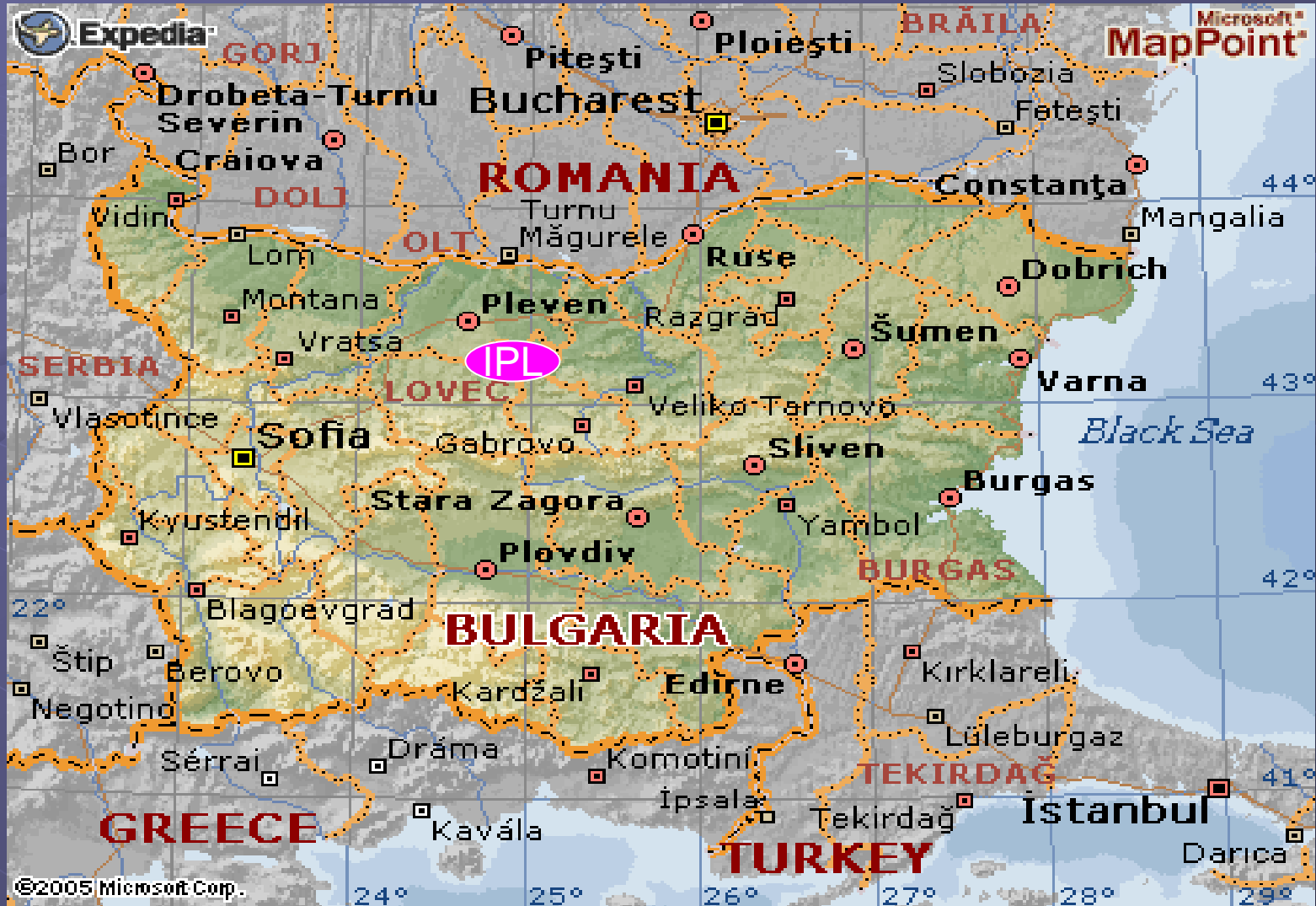
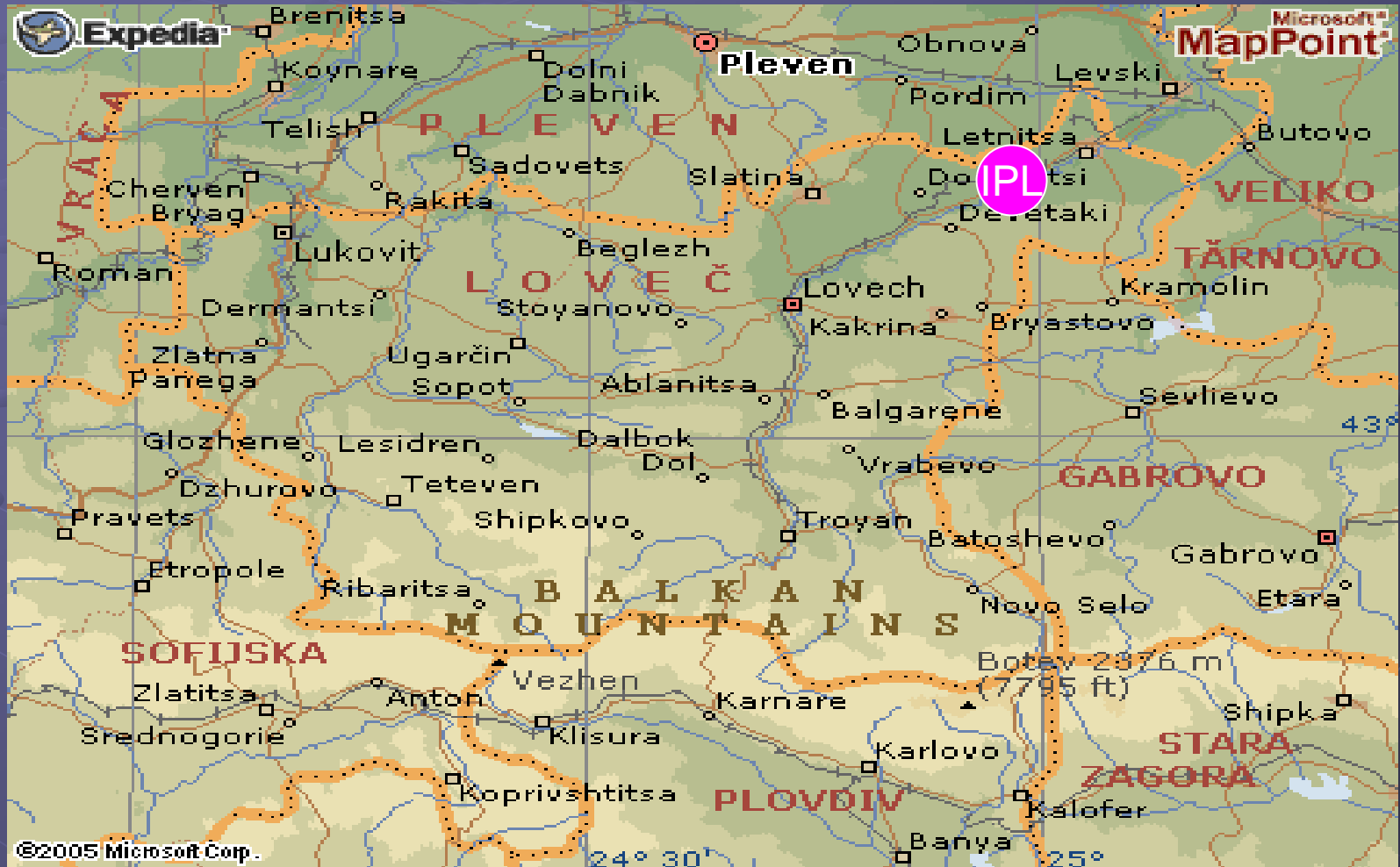


# Industrial Park Letnitsa

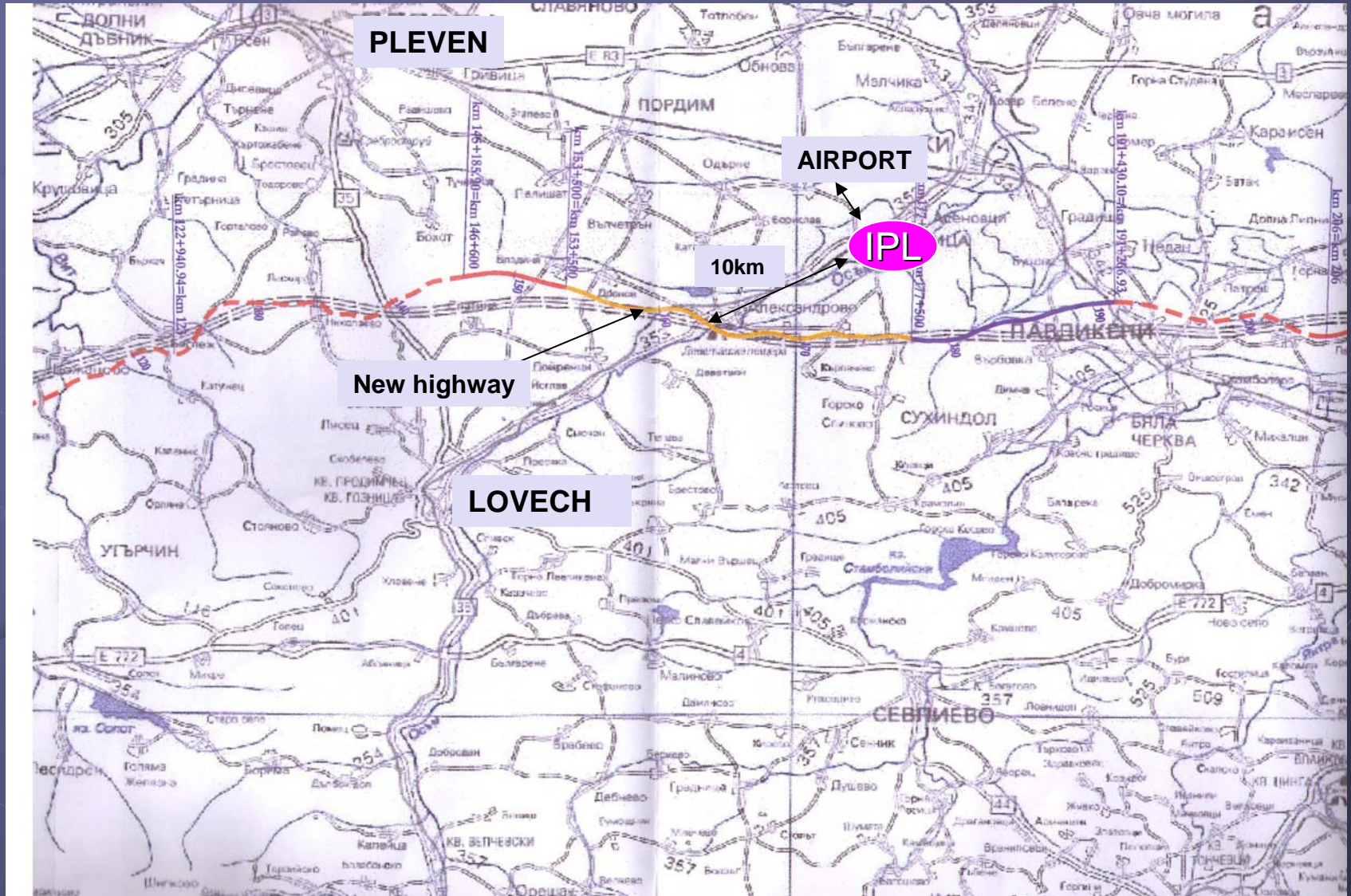
# Geographic Location



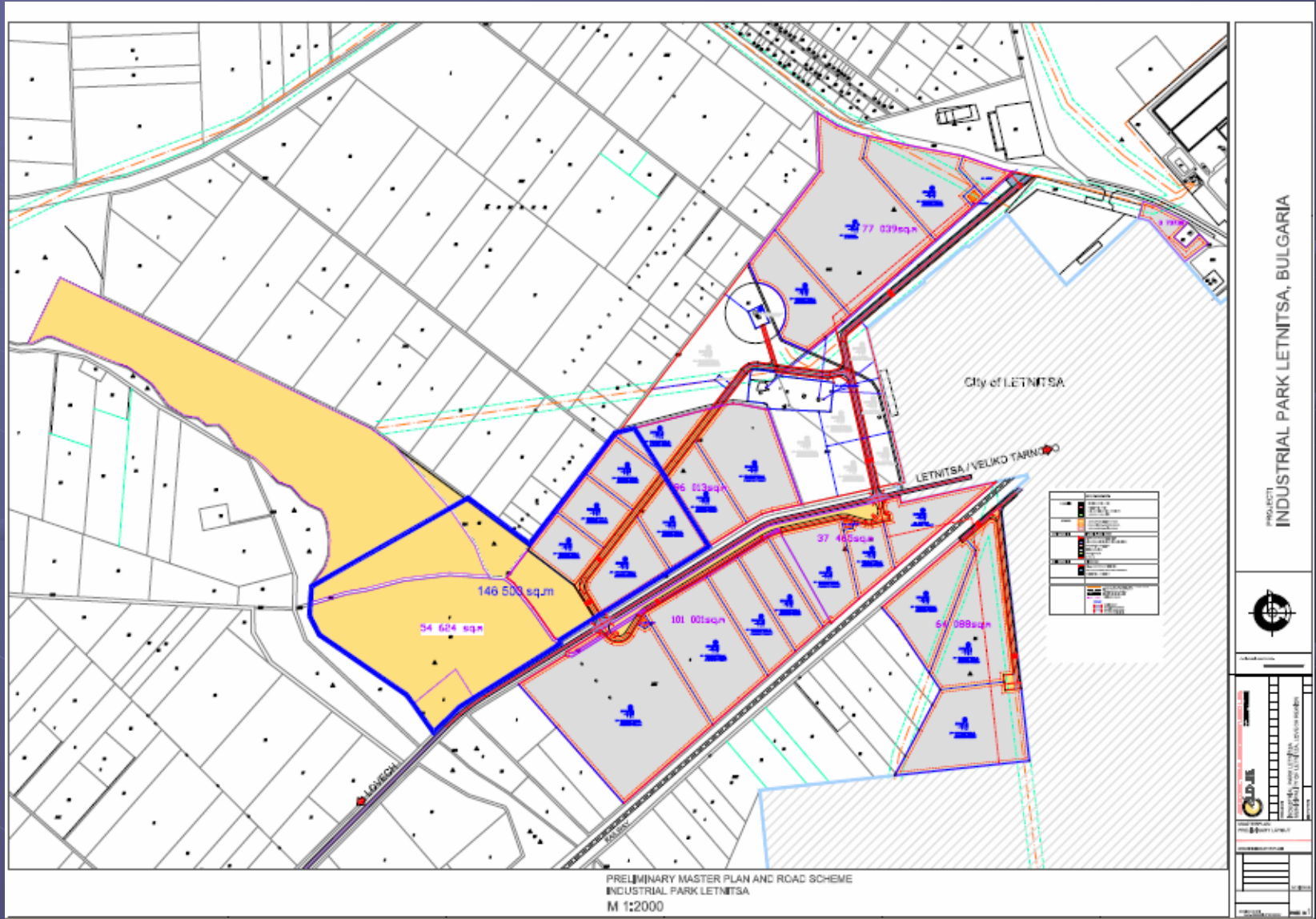
# Geographic Location



# Geographic Location



# Master Plan



# Geographic Location



# “Industrial park Letnitsa”

- The “Letnitsa Industrial Park” project is a Public-Private Partnership (PPP) initiative. The park will provide attractive conditions for building factories, logistic warehouses and other service facilities. The project is supported by the local municipality, the Invest Bulgaria Agency (IBA), Bulgarian Industrial Association and the Bulgarian Chamber of Trade and Commerce.
- “Letnitsa Industrial park” Ltd. is the company managing the park and providing full service for the investors.

# “Industrial park Letnitsa”

## ● Park description:

- Region with tax incentives-0% corporate tax in the sphere of production enterprises
- Situated in Letnitsa municipality, Lovech region
- Surface: 541 000 m. sq. (possibility to expand the site).
- Electricity supply-20 kv.
- Water supply
- Sewerage
- Optic cable
- Gas supply



# “Industrial park Letnitsa”

- Bordering on road
- Bordering on railway
- 10 km. from the newly built highway
- Proximity to:
  - Sofia-180km.
  - Lovech-30 km.
  - Pleven-40 km.
  - Gabrovo-70 km.
  - Veliko Turnovo-80 km.
  - River Port Svishtov-55 km.
  - Airport-5km.
  - Sevlievo-45 km.- “Ideal Standard ” Industrial zone - USA, see the following links:
    - ✦ <http://www.investbg.government.bg/cgi-bin/e-cms/vis/vis.pl?s=001&p=0053&n=000017&g=>
    - ✦ <http://www.vidimajsc.hit.bg/compani.htm>
    - ✦ [http://www.bbif.bg/csr.php?sub=1&company\\_id=48](http://www.bbif.bg/csr.php?sub=1&company_id=48)

# “Industrial park Letnitsa”

## ● “ONE STOP SHOP” services for the investors in the park:

- Offering institutional support by local and central authorities
- Providing industrial sites for building
- Issuing all preliminary permits for building
- Projection and construction of industrial warehouses according investors specifications
- Full engineering services
- Providing industrial space for sale or rent
- HR services

# Population data

|                                     | Total          | Men            | Women          |
|-------------------------------------|----------------|----------------|----------------|
| <b>Total population of Bulgaria</b> | <b>7932984</b> | <b>3862465</b> | <b>4066436</b> |
| <b>Lovech Region</b>                | <b>169 951</b> | <b>83 460</b>  | <b>86 488</b>  |
| <b>Aprilcy</b>                      | <b>4 137</b>   | <b>1 978</b>   | <b>2 159</b>   |
| <b>Letniza</b>                      | <b>5 607</b>   | <b>2 712</b>   | <b>2 895</b>   |
| <b>Lovech</b>                       | <b>62 162</b>  | <b>30 565</b>  | <b>31 597</b>  |
| <b>Lukovit</b>                      | <b>21 466</b>  | <b>10 599</b>  | <b>10 867</b>  |
| <b>Teteven</b>                      | <b>23 768</b>  | <b>11 881</b>  | <b>11 887</b>  |
| <b>Troyan</b>                       | <b>37 348</b>  | <b>18 273</b>  | <b>19 072</b>  |
| <b>Ugarchin</b>                     | <b>8 561</b>   | <b>4 064</b>   | <b>4 497</b>   |
| <b>Iablanitza</b>                   | <b>6 902</b>   | <b>3 388</b>   | <b>3 514</b>   |

# Labor market

| Region                       | Total population | Economic active population | Unemployment rate % |
|------------------------------|------------------|----------------------------|---------------------|
| Total population of Bulgaria | 7 932 984        | 3 704 336                  | 10,77               |
| Lovech                       | 169 951          | 77 600                     | 13,54               |
| Gabrovo                      | 144 150          | 66 804                     | 6,05                |
| Pleven                       | 312 018          | 148 178                    | 14,45               |
| Veliko Turnovo               | 293 294          | 135 465                    | 12,08               |

# Industry infrastructure

| Economic activity groupings     | Lovech       | Pleven       | Gabrovo      | V.Tarnovo    |
|---------------------------------|--------------|--------------|--------------|--------------|
| Manufacturing                   | 17523        | 22757        | 22115        | 25195        |
| Construction                    | 1113         | 3201         | 1752         | 2864         |
| Transport&Telecommunications    | 2077         | 4651         | 1967         | 5941         |
| Energy&Utilities                | 860          | 2185         | 1052         | 2079         |
| Mining & Quarrying              | 3            | 916          | 164          | 134          |
| Agriculture, Forestry & Fishery | 2171         | 5007         | 1144         | 4839         |
| Trade&Repair Services           | 4382         | 8579         | 4434         | 8836         |
| Hotels&Restaurants              | 1140         | 1472         | 1282         | 1746         |
| Real Estate                     | 962          | 3160         | 1246         | 1663         |
| Finance & Insurance             | 336          | 608          | 322          | 690          |
| Education                       | 3746         | 7504         | 3327         | 7382         |
| Healthcare&Social Services      | 2781         | 5454         | 2737         | 4705         |
| Public Administration           | 2838         | 4154         | 1587         | 3250         |
| Other Activities                | 1081         | 3451         | 1360         | 3832         |
| <b>Total</b>                    | <b>41013</b> | <b>73099</b> | <b>44489</b> | <b>73156</b> |

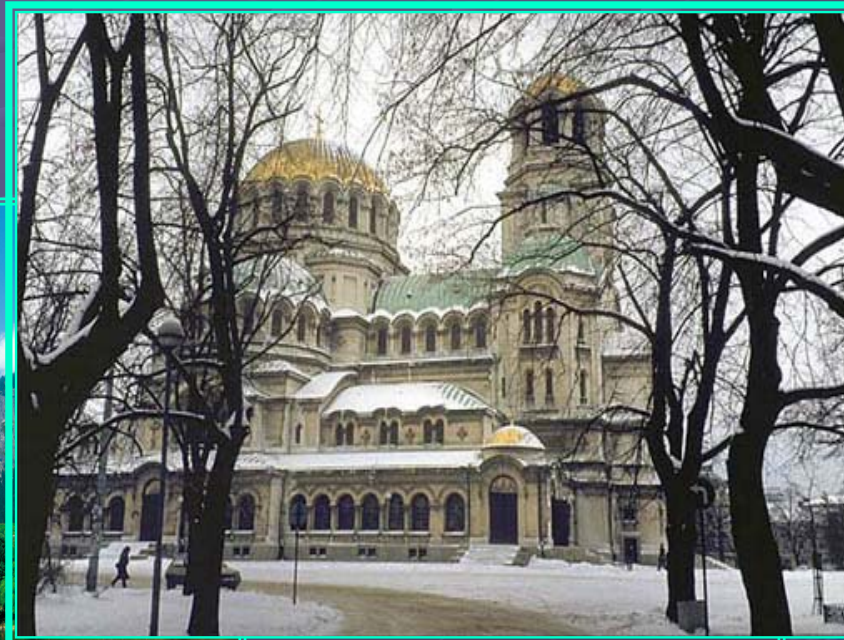
# Education

| Region         | High schools* | Colleges, universities  |
|----------------|---------------|---|
| Lovech         | 30            | Technical College   |
| Gabrovo        | 20            | Technical university  |
| Pleven         | 52            | Medical college<br>Pedagogical university<br>Medical university<br>Bulgarian Air Force Academy  |
| Veliko Turnovo | 44            | University of Veliko Tarnovo<br>National Military University<br>Academy of Economics – Svishtov<br>College of Economics and Management<br>Medical college |

\*The high schools offer as well the following specializations: light and heavy industry, food processing, machinery construction, tourism, economy and other.

# Industrial park “Letnitsa”

## ● Investment climate in Bulgaria



# The Competitive Edge of Bulgaria



- Bulgaria is politically and economically stable
- A member of NATO and in 2007 will become a full member of the European Union
- Competitive labor force in terms of both – reasonable cost and high qualifications
- Bulgaria lies at the center of South-eastern Europe and has access to a market available to 560 million consumers
- Guarantees protection of investors, we have concluded more than 100 agreements on mutual protection of investments and avoiding double taxation



# Tax Reform – Budget 2005

- Corporate tax: 15%
- Income tax rate: min - 10%; max - 24%
- Increasing the amortization norm for new plant and equipment: 50%
- Expenditure on research and development of the companies is not subject to taxation
- Tax Preferences in case of:
  - establishing a new enterprise
  - expanding of an existing enterprise
  - creating new jobs

# Investment incentives in Bulgaria

- 15% corporate income tax in 2005
- 0% corporate tax in areas of high average unemployment
- Depreciation rates – 2 years for computers and related equipment and 3 1/3 years for manufacturing equipment
- 2-year VAT exemption for imports of equipment, consumables and components related to investment projects of over €5 million value
- 0% tax on profit
- The highest bracket for personal income tax is only 24% for monthly income of over €300
- The Employment Agency's Programs and measures for employment of young people

# Transport Infrastructure Overview

- Bulgaria – strategic geographic location at the crossroads of Europe, Middle East, Russia, Asia Minor and Africa
- Crossed by transport corridors No 4, 7, 8 ,9 and 10
- Infrastructure comprising 37 288 km road, including 324 km highways
- 6 358 km railways
- Two main seaside ports, servicing over 60% of foreign trade
- Five international airports

# Contact

- Information: [info@ipl-bg.com](mailto:info@ipl-bg.com)
- Project Manager: [pm@ipl-bg.com](mailto:pm@ipl-bg.com)
- Web site: [www.industrial-zones.com](http://www.industrial-zones.com)
- Tel. : +359 887 777 990